

Trails at the Frink Centre

What the Frink Centre Has to Offer

There are **14 trails** available at the Frink Centre, each providing visitors the opportunity to observe different natural environments and a wide diversity of flora and fauna.

Highlights Include:

- Drumlin
- Streams
- Succession Fields
- Silver Maple Swamp
- White Cedar Swamp
- Marsh/ Beaver Pond
- Sugar Bush

Wetland Ecology Boardwalk

A highlight for many who visit the Frink Centre is the provincially significant wetland on the southwest side of the Frink Centre. The wetland is accessible by boardwalk, the first major project of the Friends of the Frink, completed in 1997.

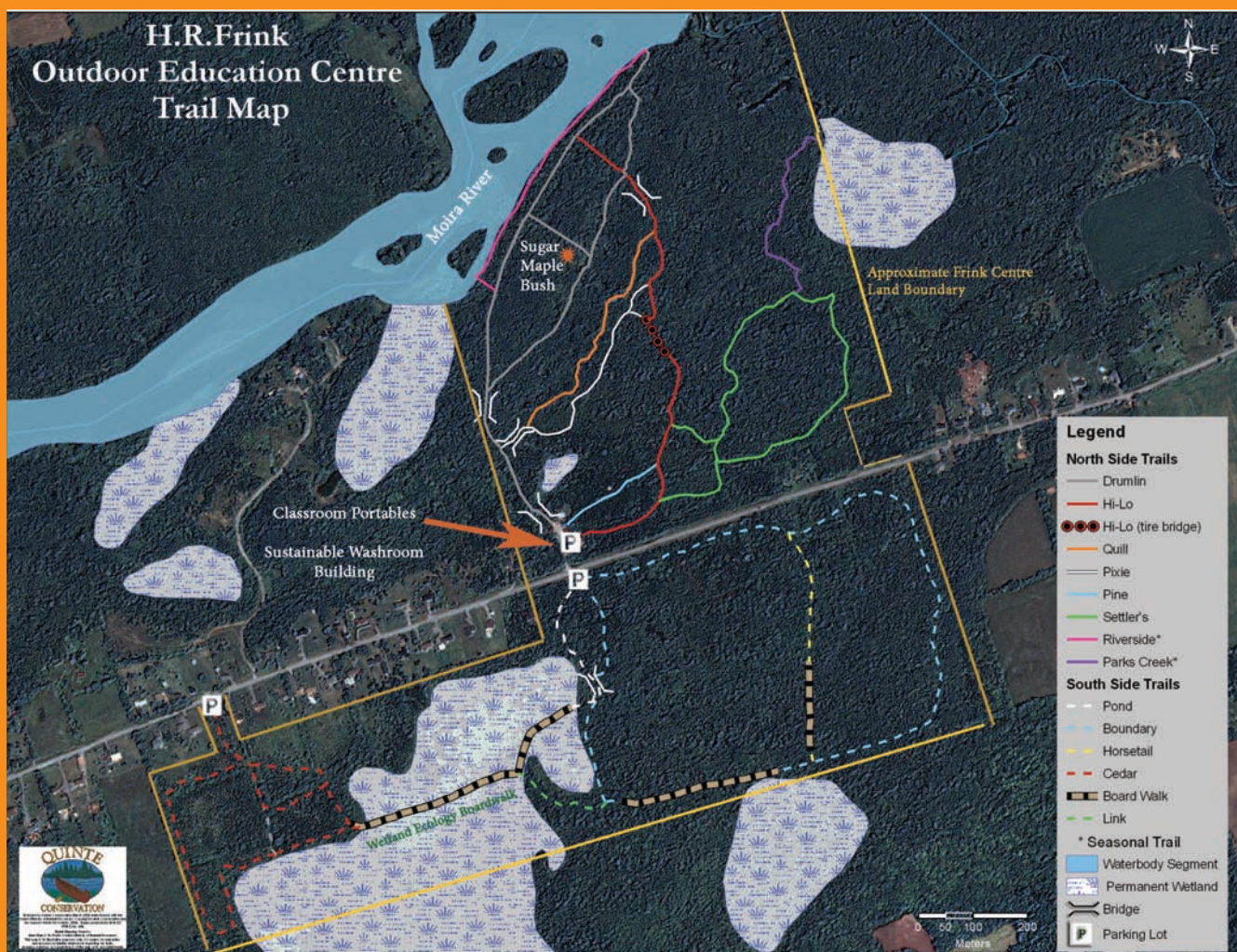
Promoting Sustainability

A washroom facility completed in 2006 also acts a learning tool on sustainable living. This Friends of the Frink initiative demonstrates strawbale construction, renewable energy, natural waste water treatment, composting toilets and landscaping with local materials and native plants.

Take your time, bring your binoculars, enjoy a morning, afternoon, or evening in the great outdoors!

PLEASE....

Take Nothing But Photographs...
Leave Nothing But Footprints...
Kill Nothing But Time.



Trails mapped by Grade 12 Quinte Secondary School student Meredith Miller in 2007

Directions



From Hwy 401, take Hwy 37 north about 9km to the 6th concession of Thurlow (Thrasher Rd.).
Follow the road east about 2km to #381 Thrasher Rd.
You will find a parking lot on the south side of the road, and portable classrooms on the north side.
Look for the Frink Centre sign.

Brochure created in May 2008

Photo Credits: Meredith Miller QSS Grade 12 Student, Bea Heissler, Maya Navrot

(613) 477.2828
frink.centre@hpedsb.on.ca
<http://schools.hpedsb.on.ca/frink>
www.fofc.ca